

INDEX

(This document has no regulatory power – for information only)

1. Introduction / Welcome	
1.1 Welcome	2
1.2 Event History	3
1.3 Event Overview	5
2. Contact Details	6
2.1 Permanent Contact Details	6
2.2 Key Officials' Contact Schedule	6
2.3 Rally HQ Contact Details	7
2.4 Media Contact Details	7
3. Programme and Critical Deadlines	8
3.1 Schedule before the Rally Week	8
3.2 Schedule during the Rally Week	8
4. Entry Details	10
4.1 Titles for which the rally counts	10
4.2 List of entry fees	10
4.3 Entry packages for non-FIA registered teams	11
5. Service Park & Remote Service Zone	12
5.1 Information about the Service Park	12
5.2 Facilities at the Service Park	12
6. Two Way Radio	13
6.1 Application Procedure	13
6.2 Contact details of authority in charge	13
7. Fuel / Tyres	13
Information in Event Supplementary Regulations	
8. Import of Vehicles and Spare Parts	13
8.1 Freight & Importing into New Zealand	13
8.2 Goods Service Licence	14
8.3 New Zealand Vehicle Registration	14
9. Helicopters	14
9.1 Registration procedure	14
9.2 Contact details for Helicopter Hire	15
10. Hospitality Arrangements	15
10.1 Contact details for person in charge	15
10.2 Spectator Rally Tour	15
11. Hotel/Accommodation Reservation	15
11.1 List of hotels	15
11.2 Contact details for reservations	15
12. Reconnaissance	16
12.1 Registration for Reconnaissance	16
12.2 Regulations & Restrictions	16
12.3 Vehicles	16
12.4 Reconnaissance Schedule	16
13. Scrutineering, Sealing and Marking	16
Information on this will be included in Event Supplementary Regulations & RG2	
14. Shakedown	16
Information on this will be included in Event Supplementary Regulations and RG2	
15. Start Procedure	16
Information on this will be included in RG2	

16. Finish Procedure	16
Information on this will be included in RG2	
17. PR Activities	17
18. Media	18
18.1 Contacts before the event	18
18.2 How to Apply for Accreditation	18
18.3 Accreditation Criteria	19
18.4 Media Room Location	19
18.5 Manufacturers' Room	19
19. Passes and Plates	20
Information on this will be included in RG2	
20. Medical & Safety Service	20
20.1 Emergency Number	20
20.2 Hospitals & Medical Centres	20
20.3 Police	21
20.4 Fire	21
20.5 Towing Service	21
20.6 Pharmacy	21
21. List of Useful Facts & Services	21
21.1 Climate	21
21.2 Time Zone	21
21.3 Currency	22
21.4 Hire Car Companies	22
21.5 Airline Companies & Airports	22
21.6 Copy Service	22
21.7 Mobile Phone (Rental, Service & Bylaws)	22
21.8 Security Companies	23
21.9 Taxis	23
21.10 Drivers' Licence Requirements	23
21.11 Maps	23
21.12 Rally Car & Reconnaissance Car Lease	23
21.13 Travelling from Auckland to Whangarei	24
21.14 Car Dealers	25
21.15 Supermarket	25
21.16 Personal Accident Insurance	25
21.17 Visa Requirements	26
21.18 Hire Equipment	27
21.19 Leisure and Recreation Options	27
21.20 Attractions & Activities in Auckland	27
21.21 Restaurants	30

Appendices

Appendix 1	Itinerary – Day 1 Itinerary – Day 2 Itinerary – Day 3
Appendix 2	Itinerary Compared with previous Years
Appendix 3	Overview Map – Day 1, 2 & 3
Appendix 4	Service Park Layout
Appendix 5	Exemption for Work Visa from Immigration NZ



1. Introduction / Welcome

1.1 Welcome from the Mayor

I would like to welcome the drivers and their teams, spectators, and the international media to Auckland for the latest round of Rally New Zealand.

This much-loved motorsport event has been held in New Zealand since 1969 and we are delighted to have it back in Auckland – back to its New Zealand home.

On behalf of the people of Auckland we look forward to sharing this three-day celebration of motorsport with you all.

The 2010 rally will showcase many of the jewels of the city including our picturesque waterfront.

The service park component has a special central city location – Queens Wharf – where a unique event hub will be created. The ceremonial start will be held in another of our waterfront venues – the Viaduct Harbour.

But my greatest delight would be to see a special stage held right in the heart of the city at the Auckland Domain, and we are working hard to secure the consent for this to proceed. What a spectacle that would be for both drivers and fans alike.

In the past year Auckland has hosted a number of international events including yachting's Louis Vuitton Pacific Series, football's FIFA U-17 Women's World Cup and basketball's FIBA U19 Men's World Championship.

Hosting Rally New Zealand, one of the most popular rallies among the WRC drivers, is another important step on the road to establishing Auckland as a major international events destination.

Auckland City Council, Rally New Zealand and Tourism Auckland are working incredibly hard to deliver a memorable event in 2010.

Lastly, we look forward to welcoming you back for the next two events, with the intention that Rally New Zealand will be on the world calendar on an annual basis.

Hon. John Banks, QSO
Mayor
Auckland City



1.2 Welcome from Organisers

The Rally New Zealand organising committee extend a warm welcome to all competitors and their teams, media and other participants. Your attendance is important to us and the world of rallying, and we look forward to welcoming and working with you to make sure that you enjoy your visit to New Zealand.

It is great to return to Sky City Auckland where the event was traditionally based for many years. New Zealand has a population of 4.1 million and Auckland is the country's largest city with a population of 1.3 million. Census figures from 2006 show 37% of the Auckland City population was born overseas.

Auckland International Airport is the gateway to New Zealand with daily flights from all major cities worldwide and we look forward to welcoming you to our country.

This year New Zealand is hosting the 5th Round of the FIA World Rally Championship, the 4th Rounds of the FIA WRC Cup for Teams, FIA Production World Rally Championship and FIA Super 2000 World Rally Championship.



In May you will enjoy our autumn season; temperatures will range from 10 – 15 degrees Celsius with occasional rain. Sunrise will be around 0700hrs with sunset at 1730hrs.

The move to Auckland brings a new service park on Queens Wharf in the heart of Auckland City with remote service used each day in Whangarei, Hampton Downs and Raglan. This move also allows the event to reuse the classic stages in the Whangarei and Kaipara districts that were a feature of rallies past and have been judged some of the best in the world.

Day two is again based in the Franklin and Northern Waikato area with the stages made up of parts of previously used roads. A feature of day two is the Superspecial Stage at the new Hampton Downs Motor Race Circuit which will be run twice along with the remote service at the same venue.

Day three uses the iconic Raglan stages with remote service in Raglan. The spectacular Whaanga Coast stage is again the feature of the last day and may again prove pivotal in the result. The event concludes on Sunday afternoon with the Ceremonial Finish in the service park at Queens Wharf.

The information contained in this Rally Guide is designed to assist you to ensure that your visit to New Zealand is free of any logistical or operational problems. If you should require any further information, we have assembled a competent and efficient team to assist you, so please do not hesitate to contact the Rally Secretariat.

As always the event has been put together with safety and you, the competitor, at the forefront of our planning and we wish you all a safe, successful and enjoyable rally.

Organising Committee
Rally New Zealand

1.3 Event History

Rally New Zealand is the longest running World Championship event in the Southern Hemisphere.

Rally New Zealand, celebrating its 40th anniversary in 2010, was first included as a round of the FIA World Rally Championship in 1977. Its status has grown internationally, with the 2001 event being awarded the WRC Rally of the Year award.

The 2010 edition of Rally New Zealand is the product of an event that started in 1969 as a marathon of endurance for everyone involved. What was a long and involved rally in the 1980s with time to rest, repair and develop tactics on a variety of road surfaces has changed to a sprint event of approximately 400 km.

The first international event, the Shell Silver Fern Rally organised by the Wellington Car Club in 1969, was won by Grady Thompson and co-driver Rick Rimmer in a V8 powered Holden Monaro. Of the 33 starters in Taupo, 22 were classed as finishers.

In 1970 the Silver Fern Rally was organised by the Canterbury Car Club and run in the South Island with a total of 67 entries.

The Heatway International Rally in 1971 was the first to be accorded international status and attracted 67 entries, with 15 from outside New Zealand. There was franchise support from British Leyland, Hillman, and Skoda. For the first time an overseas team, Australia's Bruce Hodgson and co-driver Mike Mitchell, scored a narrow victory in their Lotus Cortina from the Holden Torana GTR XU1 of New Zealand's Ralph Emson and co-driver Wayne Jones.

Three drivers have won the Rally New Zealand on three or more occasions. The first was Carlos Sainz, and co-driver Luis Moya, of Spain who won for the first time in 1990. Sainz was the first driver to successfully defend his



title in 1991 and went on to grab a hat-trick in 1992. All three titles were at the wheel of the Toyota Celica GT-4. The likeable Spaniard became the most successful driver in Rally New Zealand history when he gained his fourth victory in 1998.

Next came the reign of Scotsman Colin McRae and co-driver Derek Ringer, and the rise of Subaru. McRae won in 1993 and 1994 before emulating Sainz with a third successive win in 1995.

In 2007, Finn Marcus Gronholm, partnered by Timo Rautiainen, took Sainz's crown as the most successful driver in Rally New Zealand History when he beat Sebastien Loeb by 0.3 seconds to claim an exciting victory with the closest winning margin in the history of the WRC.

Five drivers have won Rally New Zealand on two occasions. Current World Rally Champion, France's Sebastien Loeb (2005 and 2008), Englishman Richard Burns (1996 & 2001), Finland's Timo Salonen (1980 & 1985), his countryman, Hannu Mikkola (1973 & 1979), and the internationally recognized Scotsman, Andrew Cowan (1972 & 1976).

The history of New Zealand's international rallies has been recognised by many other distinctions, including the closest winning margin in the history of the WRC in 2007 and the first time a round of the FIA World Rally Championship was held in the Pacific region.

It has also recognised the first time that British Leyland had scored World Rally Championship points for some 20 years, the first time Toyota won both the Group A and N awards on the same event and the first time the Russian Lada team competed outside Europe. Competitors continue to rate the open back-country gravel roads as a real test of driver ability, and some of the best roads in the World Rally Championship.

2008 Rally New Zealand Summary

Rally New Zealand was based in Hamilton at Mystery Creek Events Centre for the third time. The title sponsor was Repco and the event was known as Repco Rally New Zealand. The route was the same as in 2007.

Sebastian Loeb took out the event, but his win was not straightforward. It was the culmination of drama right through the 3 day event, in which he held the lead for only three of the 18 stages, and in which Fords' 1-2 domination ended abruptly on the penultimate stage, Whaanga Coast. Second placed Jari-Matti Latvala damaged his car and retired, and then Loeb's Championship rival and rally leader Mikko Hirvonen was delayed with a puncture and an off road excursion. Loeb then overtook his teammate Dani Sordo to take a most unexpected lead and Citroen finished 1-2. This gave Citroen their 50th World rally victory.

In the PWRC Mitsubishi driver Martin Prokop from the Czech Republic had never travelled this far away from home before and hoped for a rally in which he could learn the tricks of high speed driving over heavily cambered and very slippery roads. Half way through the event he discovered his careful approach had put him in the lead of the PWRC and Prokop finished 10th overall. First New Zealander home was Hayden Paddon who was fourth in the PWRC.

RALLY NEW ZEALAND PREVIOUS WINNERS

Year	1st Driver	2nd Driver	Car
1969	Grady Thompson	Rick Rimmer	Holden Monaro
1970	Paul Adams	Don Fenwick	BMW 2002
1971	Bruce Hodgson	Mike Mitchell	Ford Lotus Cortina
1972	Andrew Cowan	Jim Scott	BLMC Mini 1275GT
1973	Hannu Mikkola	Jim Porter	Ford Escort RS 1600
1974	Not Held		
1975	Mike Marshall	Arthur McWatt	Ford Escort RS1800
1976	Andrew Cowan	Jim Scott	Hillman Avenger

1977	Fulvio Bacchelli	Francesco Rossetti	Fiat Abarth 131
1978	Russell Brookes	Chris Porter	Ford Escort RS
1979	Hannu Mikkola	Arne Hertz	Ford Escort RS
1980	Timo Salonen	Seppo Harjanne	Datsun 160J
1981	Jim Donald	Kevin Lancaster	Ford Escort RS
1982	Bjorn Waldegard	Hans Thorszelius	Toyota Celica
1983	Walter Rohrl	Christian Geistdorfer	Lancia Rally
1984	Stig Blomqvist	Bjorn Cederberg	Audi Quattro
1985	Timo Salonen	Seppo Harjanne	Peugeot 205 Turbo 16
1986	Juha Kankkunen	Juha Pironen	Peugeot 205 Turbo 16E2
1987	Franz Wittmann	Jorg Pattermann	Lancia Delta HF 4W
1988	Josef Haider	Ferdinand Hinterleitner	Opel Kadett GSI
1989	Ingvar Carlsson	Per Carlsson	Mazda 323 4WD
1990	Carlos Sainz	Luis Moya	Toyota Celica GT-Four
1991	Carlos Sainz	Luis Moya	Toyota Celica GT-Four
1992	Carlos Sainz	Luis Moya	Toyota Celica Turbo 4WD
1993	Colin McRae	Derek Ringer	Subaru Legacy RS
1994	Colin McRae	Derek Ringer	Subaru Impreza 555
1995	Colin McRae	Derek Ringer	Subaru Impreza 555
1996	Richard Burns	Robert Reid	Mitsubishi Lancer Evo III
1997	Kenneth Eriksson	Staffan Parmander	Subaru Impreza 555
1998	Carlos Sainz	Luis Moya	Toyota Corolla WRC
1999	Tommi Makinen	Risto Mannisenmäki	Mitsubishi Lancer Evo VI
2000	Marcus Grönholm	Timo Rautiainen	Peugeot 206 WRC
2001	Richard Burns	Robert Reid	Subaru Impreza WRC 2001
2002	Marcus Gronholm	Timo Rautiainen	Peugeot 206 WRC
2003	Marcus Gronholm	Timo Rautiainen	Peugeot 206 WRC
2004	Petter Solberg	Phil Mills	Subaru Impreza WRC 04
2005	Sebastien Loeb	Daniel Elena	Citroen Xsara WRC
2006	Marcus Gronholm	Timo Rautiainen	Ford Focus RS WRC 06
2007	Marcus Gronholm	Timo Rautiainen	Ford Focus RS WRC 07
2008	Sebastien Loeb	Daniel Elena	Citroen C4
2009	Not Held – FIA Alternate Event Policy		

1.4 Event Overview

- 2010 FIA World Rally Championship – Round 5
- 2010 FIA Production Car World Rally Championship - Round 4
- 2010 FIA Super 2000 World Rally Championship – Round 4
- 2010 FIA WRC Cup for Teams – Round 4
- 2010 New Zealand Rally Championship – Round 2

Total Distance: 1498.01km

Stage Distance: 406.18km

Longest Stage: SS3/7 Bull 32.56km

Close of Entries: Tuesday 6 April

Sunrise: 0705 hours

Service Park: Queens Wharf, Auckland City

Parc Ferme: Sky City, Auckland

Rally HQ Location: Sky City Hotel, Corner Victoria & Federal Streets, Auckland

Rally Headquarters Opens: Sunday 2 May at 1000hrs

Press Room Opens: Wednesday 5 May at 0800hrs

Reconnaissance: Tuesday 4 May – Day 2 and Day 3 Wednesday 5 May – Day 1

Scrutineering: Wednesday 5 May at 1500hrs (except manufacturer and manufacturer team cars)

Shakedown: Thursday 6 May from 0900hrs to 1300hrs at Auckland Domain

Start Order Published: Thursday 6 May at 1630hrs on official noticeboard



Ceremonial Start: Viaduct Harbour on Thursday 6 May at 1830hrs (competitors start in reverse order)
Ceremonial Finish: Queens Wharf on Sunday 9 May at 1600hrs
Publication of Provisional Final Classification: Sunday 9 May at 1900hrs on official noticeboard
Information & Results: www.rallynz.org.nz

2. Contact Details

2.1 Permanent Contact Details

Address of the Permanent Secretariat:	Rally New Zealand Mezzanine Floor, Northern Sports Car Club Mt Richmond Domain 1110 Great South Road, Otahuhu Auckland, New Zealand
Postal Address:	Rally New Zealand PO Box 62-021, Mt Wellington Auckland 1641, New Zealand
Telephone:	+64-9-276-0882
Facsimile:	+64-9-276-0881
Email:	info@rallynz.org.nz
Website:	www.rallynz.org.nz

2.2 Key Officials' Contact Schedule

Title:	Name:	Mobile:
Clerk of the Course:	Willard Martin	+64 29-576-6437
Assistant Clerk of the Course:	Stuart Barnett – Field	+64 27-629-3516
	Steve Foster – HQ	+64 27-230-9601
	Andrew Jenkin – Safety	+64 21-990-011
	Tony Mannering – Service Parks	+64 21-270-6359
Chief Scrutineer:	Julian Leach	+64 274-467-582
Deputy Chief Scrutineer:	Dave Robb	+64 274-817-651
Competitor Relations Officers:	Gary Lathrope	+64 274-522-991
	Graham Mortensen	+64 21-1123-142
	Barry Clark	+64 274-985-552
Chief Safety Officer:	Andrew Jenkin	+64 21-990-011
Chief Medical Officer:	Dr Tony Smith (BHB, MBChB, FANZCA, FFICANZCA)	+64 274-403-968
St John Ambulance:	Charlotte Guscott	+64 274-977-505
Police Liaison Officer:	TBA	
National Press Officer:	Kate Gordon	+64 21-587-227
Chief Timing Marshal:	John Holland	+64 274-777-829
Communication Chiefs:	Richard Gamble	+64 21-729-270
	Brian Littlewood	+64 274-935-097
Service Park Co-ordinators:	Peter Thomson	+64 21 833 203
	Mark Williamson	+64 21 409 940
Chief Remote Refuels	Malcolm Laycock	+64 21 396 391
Results Co-ordinator:	Chris Grant	+64 274-865-532
VIP Liaison:	Chris Carr	+64 21-936-244
	Grahame Knight	+64 274-945-006



Event Secretary:	Campbell Robertson	+64 21-764-124
Event Administration:	Paul Mallard	+64 21-272-5596
	Brenda Lupton	+64 21-272-5592

2.3 Rally HQ Contact Details

Physical Address: Sky City Hotel, Corner Victoria & Federal Streets,
Auckland, New Zealand
Telephone: +64-9- TBA
Facsimile: +64-9- TBA
Email: info@rallynz.org.nz
Website: www.rallynz.org.nz

Secretariat Opening Hours:

Sunday 2 May	1000-1700hrs
Monday 3 - Wednesday 5 May	0800-2000hrs
Thursday 6 May	0700-1800hrs
Friday 7 May	0700-2100hrs
Saturday 8 May	0530-2000hrs
Sunday 9 May	0530-2030hrs

Official Noticeboard

Rally Headquarters
Sunday 2 May 1000hrs to Sunday 9 May 2030hrs.

A copy of all items on the official noticeboard will be on the official website www.rallynz.org.nz in the Noticeboard section.

2.4 Media Contact Details

National Press Officer: Name: Ms Kate Gordon
Phone: +64-21-587-227
Pre-event Facsimile: +64-9-276-0881
Email: kate@rallynz.org.nz

Media Centre: Sky City Grand Hotel, Federal Street,
Auckland, New Zealand
Telephone: +64-9- TBA
Facsimile: +64-9- TBA

Website: www.rallynz.org.nz



3. Programme and Critical Deadlines

3.1 Schedule before the Rally Week

Monday 14 December		
1700hrs	Rally Guide 1 published on Website	Permanent Secretariat
Friday 5 March 2010		
0900hrs	Supplementary regulations published and Entries Open Service Park Facilities Form published	Permanent Secretariat Website
Tuesday 6 April		
1700hrs	Entries Close Closing date for Co-driver Details Manufacturers and manufacturer teams must notify the FIA the name of the driver of their second car.	Permanent Secretariat Permanent Secretariat FIA
Wednesday 7 April		
	Requests for National Media Accreditation close. Requests for accreditation from electronic media must reach ISC.	Permanent Secretariat ISC
Thursday 8 April		
0900hrs	Rally Guide 2 Published. Road Books published.	Permanent Secretariat Permanent Secretariat
Wednesday 14 April		
1700hrs	Non Priority Competitors wishing to be allocated adjoining or larger than standard service areas must advise the Organiser. All orders for Service Park facilities close. Requests for International Media Accreditation close. All competitors using FIA fuel must notify Petrochem Carless of their requirements. Publication of entries accepted by the Organiser	Permanent Secretariat Permanent Secretariat FIA Website
Friday 16 April		
0900hrs	Publication of entries in seeded order.	Website
Thursday 22 April		
0900hrs 1700hrs	Media Safety Book Published. Payment for Service Park facilities must be made. Commercial fuel orders and payment must be received. Service Park plans showing container placement must be received.	Permanent Secretariat Permanent Secretariat Permanent Secretariat Permanent Secretariat
Saturday 1 May		
1000hrs	Service Park Opens.	Queens Wharf, Auckland
Sunday 2 May		
1000hrs 1400-1700hrs 1130-1630hrs	Secretariat Opens. Documentation & reconnaissance registration commences. PR Activities.	Sky City, Auckland Secretariat at Sky City Auckland

3.2 Schedule during the Rally Week

Monday 3 May		
1030-1400hrs	PR Activities.	Auckland
0900-2000hrs	Documentation & reconnaissance registration.	Secretariat at Sky City
1800-2000hrs	Recce Tracking System available for collection (for drivers nominated by FIA).	TBA
2000hrs	Scrutineering time requests must be received	Secretariat at Sky City



Tuesday 4 May

0900-2000hrs	Reconnaissance of Day 2 and Day 3	Secretariat at Sky City
1000hrs	Documentation continues.	Sky City, Auckland
1400-2000hrs	Helicopter Pilots' Briefing.	Sky City Grand Hotel, Auckland
1600hrs	Media Accreditation Centre open.	Official Notice Board
1700-1900hrs	Scrutineering Schedule published.	Queens Wharf, Auckland
	Issuing of FIA Safety Tracking Systems (for all drivers).	

Wednesday 5 May

0800-2000hrs	Reconnaissance of Day 1	
0800-2000hrs	Media Accreditation Centre open.	Sky City Grand Hotel, Auckland
	Media Centre open.	Sky City Grand Hotel, Auckland
1000-1330hrs	Scrutineering:	All at Queens Wharf, Auckland
	- Sealing of parts and delivery of Scrutineering Certificate for Manufacturers and WRC Teams.	
1300-1400hrs	- Checking of the weight for Manufacturers' and WRC Teams	
From 1500hrs	- Pre Event Scrutineering P2 and P3 (Except Manufacturer and WRC Team Cars).	
1700hrs	- Non-priority Drivers	
1600hrs	Team Managers' Meeting, (WRC Registered Teams).	C of C Office, Auckland
1800-2000hrs	Recce Tracking Systems to be returned.	Queens Wharf, Auckland

Thursday 6 May

0700-2000hrs	Media Accreditation Centre open.	Sky City Grand Hotel, Auckland
0700-2000hrs	Media Centre open.	Sky City Grand Hotel, Auckland
0900-1300hrs	Shakedown	Auckland Domain, Auckland
1330hrs	Pre-Event FIA Press Conference.	Media Centre, Sky City Grand Hotel, Auckland
1500hrs	First Stewards' Meeting.	Sky City Hotel, Auckland
1500-1600hrs	Cars arrive for Ceremonial Start	Viaduct Harbour, Auckland
1600-1800hrs	Rally Cars on display.	Viaduct Harbour, Auckland
1600-1800hrs	Driver Autograph Session.	Viaduct Harbour, Auckland
1630hrs	Publication of Ceremonial Start List.	Official Notice Board
	Publication of start list for Day 1.	Official Notice Board
1800hrs	Pre-Start Driver Interviews for invited drivers.	Viaduct Harbour, Auckland
1830hrs	Ceremonial Start. Competitors start in reverse order.	Viaduct Harbour, Auckland

Friday 7 May

0700-2100hrs	Media Centre open.	Media Centre, Sky City Grand Hotel, Auckland
0715hrs	Start Day 1.	Queens Wharf, Auckland
	End of Day Press Conference for invited drivers and team personnel.	Queens Wharf, Auckland
1950hrs	Arrive Parc Ferme In.	Sky City, Auckland
2000hrs	Publication of start list for Day 2.	Official Noticeboard
2300hrs	All cars must be returned to Parc Fermé from the 45-minute Flexi-Service.	Sky City, Auckland

Saturday 8 May

0600-2100hrs	Media Centre open.	Media Centre, Sky City Grand Hotel, Auckland
0600hrs	Start Day 2.	Sky City, Auckland
	End of Day Press Conference for invited drivers and team personnel.	Queens Wharf, Auckland
1812rs	Arrive Parc Ferme In.	Sky City, Auckland
2000hrs	Publication of start list for Day 3.	Official Noticeboard
2100hrs	All cars must be returned to Parc Fermé from the 45-minute Flexi-Service.	Sky City, Auckland

Sunday 9 May

0600-0000hrs	Media Centre open.	Media Centre, Sky City Grand Hotel, Auckland
0600hrs	Start Day 3.	Sky City, Auckland
1600hrs	Ceremonial Finish & Prizegiving.	Queens Wharf, Auckland



1630hrs	Post Event Scrutineering.	Queens Wharf, Auckland
	Post Event FIA Press Conference.	Media Centre, Sky City
1900hrs	Provisional Final Classification published.	Official Noticeboard
1930hrs	Final Official Classification published.	Official Noticeboard
2030hrs	Rally Headquarters closes.	Sky City, Auckland

Monday 10 May

Media Centre closes.

Media Centre, Sky City Grand Hotel, Auckland

4. Entry Details

4.1 Titles for which the rally counts

FIA Titles:

- FIA World Rally Championship for Drivers and Co-Drivers
- FIA World Rally Championship for Manufacturers
- FIA Production Car World Rally Championship for Drivers and Co-Drivers
- FIA Super 2000 World Rally Championship for Drivers and Co-Drivers
- FIA WRC Cup for Teams

Other Titles:

2010 New Zealand Rally Championship

4.2 List of entry fees

(a) Competitors Registered to contest the 2010 FIA World Rally Championship for Manufacturers, entry fees will be as per FIA Regulations.

(b) Entry fee for FIA Priority 2 Competitors

- With optional advertising proposed by Organisers: € 3,650.00
- Without optional advertising proposed by Organisers: € 4,650.00

(c) Entry fee for Competitors registered to contest the 2010 FIA Production Car World Rally Championship, S2000 WRC or FIA WRC Cup for Teams.

- With optional advertising proposed by Organisers: € 3,650.00
- Without optional advertising proposed by Organisers: € 4,650.00

(d) Entry Fee for Drivers registered in the 2010 New Zealand Rally Championship (includes Stage Notes)

- With optional advertising proposed by Organisers: NZ\$2800.00*
- Without optional advertising proposed by Organisers: NZ\$3800.00*

* (subject to incentive discount)

(e) Entry fee for Other Competitors:

- With optional advertising proposed by Organisers: NZ\$2600.00*
- Without optional advertising proposed by Organisers: NZ\$3600.00*

* (subject to incentive discount)

Payment of entry fees can be made by;

Cheque, Bank Draft, Telegraphic Transfer, or Credit Card:- Visa/Amex/Diners/MasterCard.

Note: Please note that any bank charges must be charged to the sender's account.

Bank account details for sending a Telegraphic Transfer are:

Bank: ASB Bank Ltd
 Address: Corner Queen Street & Wellesley Street, Auckland, New Zealand
 Account Name: Rally of New Zealand Account Number: 12-3011-0203851-00
 IBAN/Swift code: ASBZNZ2A



Please use the driver's surname as a reference when making the payment.
When paying by Telegraphic Transfer it is essential that you provide details of this payment by fax to the Rally Office to ensure that payment is receipted prior to the close of entries.

Criteria for acceptance of entries:

Attention is drawn to Article 74 of the International Sporting Code relating to the refusal of an entry.

Entry Dates:

- Entries Open: 0900hrs Friday 5 March 2010
- Entries Close: 1700hrs Tuesday 6 April 2010

Anyone wishing to take part in Rally New Zealand 2010 must send the completed official entry form to the Rally Secretariat before Tuesday 6 April 2010 at 1700hrs. Manufacturers entered in the FIA WRC and competitors in the FIA PWRC, FIA SWRC and FIA WRC Cup for Teams must use the entry form supplied by the FIA.

To be accepted, this entry form must be accompanied by proof of payment of the entry fee. Overseas competition licence holders must hold an authority from their ASN or obtain its stamp on their entry form.

Additional Fees:

- Motor homes and Management Vehicles NZ\$300.00
- Change of Crew Member NZ\$250.00
- Additional Road Book Sets NZ\$25.00
- Stage Notes NZ\$200.00
- Fee for completing Reconnaissance only NZ\$3,000.00

4.3 Entry packages for non-FIA registered teams

	PWRC & SWRC	Non-Priority
Vehicle Plates		
• VIP (or guest) plates	1	0
• Service plates	1	2
• Auxiliary plates	2	1
• Reconnaissance Service Plates	1	1
Administration & Passes		
• Regulations	2 (2)	1 (1)
• Road book sets	3 (2)	1 (1)
• Rally Guide 2	3 (2)	2 (2)
• Route maps	5 (2)	2 (2)
• Programme	5	2
• Results CD	2 (2)	1 (1)
• Team passes	0	10

(X) = No. of copies to be mailed / couriered to Team Manager



5. Service Park(s) and Remote Service Zone

5.1 Information about the Service Park

The service park will be located at Queens Wharf, Auckland City. The GPS reference is S36.50.563 E174.46.047

It is requested that those competitors who require containers to be placed in their service area provide a plan of their service area to assist with the placement of containers. This information should be sent to the organisers by Thursday 22 April.

Competitors can access the service park from Saturday 1 May 2010 at 1000hrs.

Depending on the site operations schedule, special arrangements may be made to access the service park earlier than Saturday 1 May. Please contact the rally office with this or any other special requests. If arrangements have not been made access to the site is not guaranteed. All costs of moving the equipment either within or outside the Service Park to its final position will be borne by the owner of the equipment.

Further details on access will be available in RG2.

There will be Remote Service Areas on each day located at Whangarei (day 1), Hampton Downs (day 2) and Raglan (day 3).

5.2 Facilities at the Service Park

The organisers will provide the following facilities:

- Public toilets.
- General water. Water is available as organised with the Rally Office or for general use at points located throughout the service park.
- General waste collection.
- General venue security.
- Oil disposal.

The following facilities can be ordered:

- Analogue phone lines.
- ADSL connections.
- Dedicated portable toilets.
- Dedicated security.
- Water connections.
- Electrical connections.
- Forklifts for exclusive use.
- Partitioning
- Portable buildings
- Catering

Other facilities are also available for hire. Please contact the Rally Office for details. A full list of services with prices will be published on the event website as part of the Service Park Facilities Order Form which will be available from Friday 5 March.

To order facilities please download the "Service Park Facilities Order Form" from the event website www.rallynz.org.nz

- Order Forms must be received by the organisers by Wednesday 14 April.
- Rally New Zealand will confirm the order and invoice competitors within 5 working days.
- Payment must be received by Rally NZ by Thursday 22 April.
- Orders placed after 22 April will incur a 15% surcharge and payment by credit card must accompany the order.
- Any costs incurred for telecommunications and other additional items must be paid on receipt of invoice.
- Any damage to items will be invoiced post event and must be paid on receipt of invoice.



6. Two Way Radio

6.1 Application Procedure

A licence is required for the use of 2-way radios in New Zealand.

Rally New Zealand has a limited number of simplex licences available for use by application before the start of administrative checking and payment of usage fee to the Rally Office. These will be distributed on a first come, first served basis. They are 84.062500, 84.500000, 84.525000, 150.212500, 150.237500, 150.262500, 153.581250, 165.737500, 166.275000, 453.493750, 461.543750, 488.293750, 488.331250, and 449.943750 MHZ.

Please note that the following frequencies are not available for competitors:

- 138.000MHz to 150.000MHz and
- 230.000MHz to 400.000MHz and
- 430.000MHz to 440.000MHz

6.2 Contact details of authority in charge

Competitors who wish to apply for their own licence need to do so online at <http://www.rsm.govt.nz> prior to Thursday 1 April 2010.

7. Fuel / Tyres

Information will be contained in the Supplementary Regulations.

8. Import of Vehicles and Spare Parts

Rally and support vehicles, parts, tyres and components can be temporarily imported into New Zealand without payment of Duty and Goods & Services Tax under an ATA Carnet issued by the Chamber of Commerce in the exporting country. The only items that are excluded are expendable products such as oil and promotional giveaways. Any items that are not exported will be subject to payment of Duty (where applicable) and Goods & Services Tax.

New Zealand Customs have made special arrangements for competitors in Rally New Zealand. It is recommended to use ATA Carnets. All values must be at the normal wholesale price in the country of export.

8.1 Freight & Importing into New Zealand

Import Bond – Rally New Zealand has established a Bond with New Zealand Customs which allows teams to enter all vehicles, parts and equipment using normal commercial invoices instead of Carnets. This procedure is quick and carries no additional costs other than a NZ\$350 processing fee per transaction inclusive of import and export. No further duties or taxes are applicable providing all goods are re-exported at the end of the rally. The only items that are excluded are expendable products such as oil and promotional giveaways. ATA Carnets are acceptable.

Documents should be faxed or e-mailed prior to the vessel's arrival to Malcolm Total Logistics who manage the bond to ensure all procedures are completed and to prevent any possible delays.

Malcolm Total Logistics and White Knight International are the preferred providers of Customs and Forwarding services to Rally New Zealand. For assistance with your customs or forwarding needs, please contact:



Malcolm Total Logistics Ltd
PO Box 53-003, Auckland Airport, New Zealand
Phone: +64-9-275-3007
Facsimile: +64-9-275-1978
Email: rally@malcolm.co.nz

Malcolm Total Logistics and White Knight International can provide the following additional services: International freight at preferential rates to New Zealand, all Customs and quarantine requirements, delivery to site and unpack/repack of containers.

8.2 Goods Service Licence

A Goods Service Licence is not required for rally support vehicles brought into the country by international teams. These vehicles are now declared mobile workshops and the drivers of these vehicles are not required to maintain driving hours logbooks. Drivers must have a copy of the Exemption Letter that will be contained in Rally Guide 2 with them at all times.

8.3 New Zealand Vehicle Registration

On arrival in New Zealand you will need to complete the following steps to enable your registration to be processed.

- Fill out an *Application for registration of an overseas visitor's vehicle* (form MR 2C) – available from VINZ or the Rally Office, one form per vehicle. Photocopies of this form are not acceptable. Provide proof that the vehicle is currently registered in your name in its country of origin (e.g. by providing original vehicle registration documents)
- Show your Carnet or temporary import entry
- Provide identification that shows your name, date of birth and signature
- Pay an Accident Compensation Corporation (ACC) levy, but none of the other registration and licensing fees.

All rally vehicles must obtain a Warrant of Fitness (cars) or Certificate of Fitness (trucks) before completing New Zealand vehicle registration. Arrangements have been made with the New Zealand Police - Land Transport New Zealand (LTNZ) for overseas rally vehicles to be checked at the following authorised testing station:

VTNZ Testing Station
65-71 The Strand, Parnell
Auckland
Phone: +64-9-377-4971 ext 9400

VTNZ will perform inspections at the service park by prior appointment. For further details please contact: Dave Robb, email: dave@vtnz.co.nz or mobile: +64-274-817-651. For vehicles with a gross vehicle mass of more than 3500 kg a Certificate of Fitness is required and it is suggested to contact Dave Robb for further information prior to inspection.

LTNZ advise that these vehicles may be driven on New Zealand roads prior to carrying out the registration and inspection procedures from the point of entry into New Zealand to your workshop or authorised testing Station.

9. Helicopters

9.1 Registration Procedure

All aircraft including helicopters flying in support of the rally must be registered with the Rally Organisers. Rally New Zealand will operate a "Restricted Airspace" over the rally route and only aircraft registered with the Organisers will be permitted to enter the airspace. To register your aircraft please fill in the Helicopter Registration Form on the event website or contact the Rally Office for a form – email info@rallynz.org.nz



9.2 Contact details for Hire Helicopter Company:

Heletranz Limited

PO Box 300460, Albany, Auckland, New Zealand

Attention: Tony Monk

Phone: +64-9-415-3550

Email: team@heletranz.co.nz

Mobile:

+64-274-929130

Facsimile:

+64-9-415-3660

Website:

www.heletranz.co.nz

10. Hospitality Arrangements

10.1 Contact Details for person in charge of hospitality arrangements

Rally New Zealand will be offering a diverse range of Corporate Hospitality Packages, ranging from special stage marquee environments to corporate villas.

For further information, please contact:

Cherie Brown Marketing & Promotions Manager

Postal Address: PO Box 62021

Mt Wellington

Auckland 1641, NZ

Telephone: +64-9-276-0882

Mobile: +64-21-777-110

Email: cherie@hotchilli.co.nz

Website: www.rallynz.org.nz

10.2 Spectator Rally Tour

Rally New Zealand will again offer a Spectator Tour that allows your guests the opportunity to view the excitement of the WRC from the comfort of a luxurious Minibus. Select from a One Day tour or the full Three Day event tour.

For further information contact the official tour provider Rally Tours NZ Ltd.

www.rallytours.co.nz/rally_new_zealand.htm or gp.coaches@clear.net.nz

11. Hotel / Accommodation Reservation

11.1 List of Hotels

SKYCITY Auckland is the base for Rally New Zealand 2010. The complex features two hotels; SKYCITY Hotel and SKYCITY Grand. The complex also includes the Skytower which is the tallest manmade structure in New Zealand at 328 metres high, SKYCITY Casino and many restaurants. SKYCITY will feature a dedicated Rally Bar, special Rally offers for all on-site guests as well as being the event base. SKYCITY is offering special rally rates for both hotels and can assist with all accommodation needs.

11.2 Contact details for reservations

To book or make an enquiry, please contact

Callum Mallett, SKYCITY Group Business Development Manager

Ph. +64 9 363 6176 or email: callum.mallett@skycity.co.nz



12. Reconnaissance

12.1 Registration for Reconnaissance

All competitors taking part in reconnaissance must register at the Rally Secretariat to get all the necessary documentation before starting their reconnaissance. Registration for reconnaissance can be done at the following times at the Rally Secretariat:

Sunday 2 May	1400-1700hrs
Monday 3 May	0900-2000hrs

For Priority 1 and 2 drivers a team member duly designated in writing can collect the documentation. Other crews may have another team member collect their documentation only if their entry form is completed otherwise they have to register in person.

To assist competitors reconnaissance registration may be completed outside these times either at the Rally New Zealand office before Friday 30 April or at the event secretariat by prior appointment.

12.2 Regulations & Restrictions

Competitors will be divided into two groups during reconnaissance - Priority 1 & 2 drivers and Priority 3 & Others.

12.3 Vehicles

Vehicles used for reconnaissance must comply with Article 25.1 of the FIA WRC Regulations.

12.4 Reconnaissance Schedule

Tuesday 4 May Day 2 & 3 (southern stages)

Wednesday 5 May Day 1 (northern stages)

Full details will be included in the Supplementary Regulations and RG2.

13. Scrutineering, Sealing and Marking

Information on this will be included in the Supplementary Regulations and RG2.

14. Shakedown

Information on this will be included in the Supplementary Regulations and RG2.

15. Start Procedure

Information on this will be included in RG2.

16. Finish Procedure

Information on this will be included in RG2.



17. PR Activities

Friday 30 April

Rally New Zealand Launch Party

Sky City

Sunday 2 May

1130 – 1200hrs WRC Drivers vs All Blacks
 1230pm – 1400hrs PWRC/SWRC Bridge Climb
 1400 – 1600hrs Meet the Drivers & Autograph Session
 1600 – 1630hrs Driver Demonstration

Eden Park, Auckland
 Auckland Harbour Bridge
 Sky City
 Federal Street, Sky City

Monday 3 May

1000 – 1500hrs Service Park School Group Visits
 1030 – 1230hrs WRC Drivers race on America's Cup Boats

Queens Wharf
 Auckland Harbour

Tuesday 4 May

1000 – 1500hrs Service Park School Group Visits
 1 – 2 hours/Time TBC WRC Lecture to University students

Queens Wharf
 Auckland University

Wednesday 5 May

1000 – 1500hrs Service Park School Group Visits

Queens Wharf

Thursday 6 May

0700 – 0900hrs Rides to School – Competition Winners
 0900 - 1300hrs Shakedown Rides
 1230 – 1250hrs Rally Convoy
 1330 – 1400hrs WRC Press Conference

Auckland
 Central City
 Sky City

Pre-Start Activity at Auckland Viaduct

1600 – 1800hrs Rally Cars on display
 1600 – 1630hrs Service Crew Raft Race
 1600 – 1700hrs Driver Autograph Session – NZRC, PWRC, & SWRC
 1700 – 1800hrs Driver Autograph Session – WRC
 1800 – 1808hrs Pre-Start Driver Interviews on Start Ramp
 1808 – 1818hrs Maori Challenge with WRC Driver

Friday 7 May

Stage Activity - WRC Promotional Caravan

Lunchtime Activity at Remote Service

- Driver Demonstration
- Driver Autograph Session

End of Day One Activity

- End of Day Press Conference
- Driver Autograph Session (10 min)
- End of Day Interview

Whangarei

Queens Wharf
 Queens Wharf
 Sky City

Saturday 8 May

Stage Activity - WRC Promotional Caravan

Lunchtime Activity at Remote Service

- Driver Demonstration
- Driver Autograph Session

End of Day Two Activity

- End of Day Press Conference
- Driver Autograph Session (10 min)
- End of Day Interview

Hampton Downs

Queens Wharf
 Queens Wharf
 Sky City



Sunday 9 May

Stage Activity - WRC Promotional Caravan

1600 – 1700hrs

Ceremonial Finish

2000hrs – Late

After Party

Queens Wharf

Sky City

18. Media

18.1 Media Contacts before the Rally

Media Manager:

Name:

Ms Kate Gordon

Phone:

+64-21-587-227

Pre-event facsimile:

+64-9-276-0881

Email:

kate@rallynz.org.nz

18.2 How to Apply for Accreditation

As a round of the FIA World Rally Championship, Rally NZ has guidelines for media accreditation set out by the FIA, the international governing body of motorsport. Please follow the instructions carefully. We want to make your accreditation application and work on-event productive and pleasant experiences.

1) New Zealand print journalists, photographers and radio stations

These media representatives must fill in the application form available on our website www.rallynz.org.nz in the Media section from mid-January 2010. The completed application form and all relevant accompanying documentation must reach the Rally New Zealand Media Office by **Wednesday 7 April 2010**. Please note that applications which are late or incomplete cannot be considered.

Address: Rally New Zealand Media Accreditation
P O Box 62021
Mt Wellington 1641
Auckland

The application must include:

1. The original accreditation form carefully filled in and with all required signatures.
2. A formal request for accreditation on the publication's official letterhead, signed by the Editor, Programme Director or relevant senior staff member.
3. If print media, a sample of the publication (preferably including previous Rally NZ coverage).
4. Examples (photocopies or audio recordings) of either Rally NZ coverage or another significant 2008-09 international rallying event.
5. Copy of the representative's national press card.
6. An outline of the coverage your media organisation plans to devote to Rally NZ 2010.

Please note:

1. Generally, a **maximum of two representatives** (journalists and/or photographers) per print publication may be accredited.
2. A maximum of **12 photographers' media passes** can be issued to New Zealand photographers, according to FIA regulations.

Approvals and Accreditation Agreement:

The Rally New Zealand Media Office sends a list of proposed national press representatives to the FIA WRC Media Delegate one week after applications close. When the list has been approved by the FIA, RNZ's Accreditation Officer will confirm the accreditation to each applicant via email. The Rally New Zealand Media Office also collates a list of national radio reporters seeking accreditation for ISC and sends this for their approval. An Accreditation Agreement will be attached to the confirmation email. Each representative must have the Agreement signed by



their Editor or Programme Director and bring it with them when they arrive at the event to collect their media credentials. *No media credentials can be collected without this document.*

2) International print journalists, international photographers and all press agencies

Representatives of the international media will be accredited directly by the FIA. A link taking you to the FIA website with the relevant accreditation form and guidelines will be available in January 2010 and applications must reach the FIA External Relations Department by Wednesday **14 April 2010**.

3) Websites, TV and International Radio Stations

Representatives of New Zealand websites and television channels and international radio stations are accredited by the WRC broadcast rights holders, International Sportsworld Communicators (ISC). Details regarding the relevant accreditation form and guidelines will be available on this website in January 2010. Note the deadline for accreditation applications will be **Wednesday 7 April 2010**.

18.3 Accreditation Criteria

The following criteria will be considered for each application:

- Compliance with the accreditation deadline;
- Compliance with the requested elements of the procedure;
- Commitment of coverage devoted to the event;
- Circulation and quality criteria.

Coverage: For a daily newspaper, a substantial amount of coverage for the event is required. For example, an introductory article in the Thursday edition, follow-up articles in Friday, Saturday and where applicable, Sunday editions, plus an event report in the Monday edition. For a weekly or monthly publication, a substantial amount of coverage for each event is required.

Circulation and quality: Accreditation decisions are based on the 'media market' in New Zealand. The highest standards of fairness and accuracy are expected as a minimum quality requirement from the printed press.

Photographers: Applications must follow the same criteria, as stated above. In addition, publications or agencies must supply evidence of independent coverage of a minimum of 15 pictures published per pass issued at each WRC event.

Freelance journalists must apply for credentials via their own agencies. The onus is on the freelance applicant to prove the supply of regular stories to several publications corresponding to the accreditation criteria.

Please note that all accredited publications must be on sale to the general public via retail outlets (trade, club or internal company magazines cannot be accredited).

18.4 Media Room location

The Media Room provides facilities for accredited media according to FIA specifications and will be located on Level 7, Sky City Grand Hotel, Federal Street, Auckland. Each work station will comprise a suitable work-desk and chair with access to telephone, facsimile and ADSL internet connections, and printers and rally results computers.

18.5 Manufacturers' Room

The Manufacturers' Room provides working facilities for the press personnel of Manufacturer Teams entered in the FIA WRC and tyre sponsor Pirelli and is located on Level 7, Sky City Grand Hotel, Federal Street, Auckland. Each work station will comprise a suitable work-desk and chair, while telephone and ADSL internet connections and other services can be ordered through Rally NZ. A full list of services, with prices, will be published on the event website as part of the Manufacturers' Facilities Order Form which will be available from 1 March.



Facilities Order Procedure:

To order facilities, please download the “Manufacturers’ Facilities Order Form” from the forms section of the event website www.rallynz.org.nz

- Order forms must be received by the organisers by Wednesday 14 April.
- Rally NZ will confirm the order and invoice Manufacturers within five working days.
- Payment must be received by Rally NZ by Thursday 22 April.
- Orders placed after 22 April will incur a 15% surcharge and payment by credit card must accompany the order.
- Any costs incurred for telecommunications and other additional items must be paid on receipt of invoice.

19. Passes and Plates

Information on this will be included in RG2.

20. Medical and Safety Service

20.1 Emergency Number

For all Emergency Services dial: 111 and ask for Fire, Police, or Ambulance

The event emergency telephone number is: +64-9-TBA.

20.2 Hospitals & Medical Centres

Medical service is available at Medical Clinics located throughout the greater Auckland region. The closest facilities to Rally Headquarters are:

- Auckland Hospital, 24 hour Accident & Emergency
50 Park Road, Auckland City, Phone: +64-9-367-0000
Located 3km from Rally Headquarters.
- Accident & Medical,
City Med Ground Floor, Quay West Building, Cnr Albert & Mills Lane, Auckland Central
Phone: +64-9-377-5525
- Ponsonby Accident and Medical Clinic and Dentist 7.30am to 10.00pm
202 Ponsonby Road, Ponsonby, Auckland City, Phone: +64-9-376-5555
Located 3km from Rally Headquarters.
- White Cross Accident and Medical Clinic and Dentist 9.00am to 9.00pm
122 Remuera Road, Remuera, Auckland City, Phone: +64-9-524-8834
Located 7km from Rally Headquarters.

On the Rally Route the medical facilities are:

Day1 - Friday 7 May

Whangarei Hospital, Maunu Road, Whangarei Ph. +64-9-430-4100

Maungaturoto Medical Centre, Hurndall Street, Maungaturoto Ph. +64-9-431-8576

Auckland Hospital, 24 hour Accident & Emergency, 50 Park Road, Auckland City, Ph. +64-9-367-0000

Middlemore Hospital, Hospital Road, Middlemore, South Auckland Ph. +64-9-276-0000

Day 2 - Saturday 8 May

Middlemore Hospital, Hospital Road, Middlemore, South Auckland Ph. +64-9-276-0000

Manukau Accident & Medical Centre, 16A Bakerfield Place, off Great South Road, Manukau

Ph. +64-9-263-7770

Day 3 - Sunday 9 May

Middlemore Hospital, Hospital Road, Middlemore, South Auckland Ph. +64-9-276-0000

Manukau Accident & Medical Centre, 16A Bakerfield Place, off Great South Road, Manukau

Ph. +64-9-263-7770

West Coast Health Clinic, 12 Wallis Street, Raglan

Phone: +64-7-825-0114



20.3 Police

Dial 111 and ask for Police

20.4 Fire

In an Emergency dial 111 and ask for Fire

20.5 Towing Service

Pre-Event Towing:

- Northland Area:
Auto Recovery Services, 24 Port Road, Whangarei (Tony) Phone: +64-9-438-1047
Pete's Towing, 12 Hewlett Street, Whangarei (Pete) Phone: +64-9-438-7277
Noel Radd Ford, Main Road, Maungaturoto (Bob) Phone: +64-9-431-8483
Gas Maungaturoto, 28 Hurndale Street, Maungaturoto (Matt) Phone: +64-9-431-8174
- Franklin Area:
Counties Towing, RD 3 Hunua Road, Papakura (Dennis) Phone: +64-9-299-8451
Jack Perry, PO Box 177, Pokeno (Jack) Phone: +64-27-286-8536
- Te Akau Area:
Craig Pendon, 149 Hakanoa Street, Huntly (Craig) Phone: +64-27-499-4161
- Raglan Area:
Bow Street Motors, 20 Bow Street, Raglan (Gordon) Phone: +64-7-825-8150
Graham Garret Motors, PO Box 142, Raglan (Graham) Phone: +64-7-825-8393

On Event Towing:

- Rally Headquarters Phone: +64-9 TBA

20.6 Pharmacy

The closest pharmacy to Sky City Hotel is:

Radius Pharmacy, 104 Queen Street, Auckland City

Phone +64-9-303 4253

21. List of Useful Facts and Services

Information on New Zealand – visit www.newzealand.com

21.1 Climate

May in the North Island of New Zealand is the autumn season. Temperatures range from 10-20 degrees Celsius with occasional rain. During the week of the rally, sunrise will be at 0705hrs and sunset will be at 1729hrs (approximately).

Meteorological Service of New Zealand Limited (MetService) is New Zealand's national meteorological service.

MetService has designed a WRC internet forecast and observation package that contains a wide range of weather information ranging from real time radar imagery and weather observations to hourly site specific forecasts and weather warnings. This package is available to interested parties. For further details and cost options contact Robert Hamilton

Telephone +64-4-4700-771
robert.hamilton@metservice.com

Mobile +64-27-549-7928

21.2 Time Zone

Greenwich Mean Time plus 12 hours.



21.3 Currency

New Zealand currency system is based on dollar and cent denomination. Coins are 10c, 20c, 50c, \$1 and \$2. Notes are \$5, \$10, \$20, \$50, and \$100.

Banks are open Monday to Friday, 9.00am to 4.30pm. All banks have Automatic Teller Machines (ATM) which operate 24 hours a day and accept all major credit cards. An ATM is located in the Atrium Lobby at Sky City Hotel and also through the Casino. Money changing facilities are also available in the Lobby of the Sky City Hotel in the BNZ Bank.

GST of 12.5% is added to all goods and services in New Zealand. GST is included in the price unless otherwise stated. Purchases made in Duty Free shops are free of GST. Tipping in New Zealand is not necessary, however if you have found the service (or food) exceptional it is perfectly in order to tip 10% of the total bill.

21.4 Hire Car Companies

For Car, Truck and Van rentals contact:

Budget Rent-A-Car
PO Box 76-183, Manukau City, New Zealand
605b Great South Road, Manukau City
Phone: +64-9-263-8916
Fax: +64-9-263-8910
Email: manukau@budget.co.nz

21.5 Airline Companies and Airports

Aerolineas Argentinas	+64-9-379-3675	www.aerolineas-argentinas.com
Air New Zealand	+64-9-336-2424	www.airnewzealand.co.nz
American Airlines	+64-9-912-8814	www.aa.com
British Airways PLC	+64-9-966-9777	www.britishairways.com
Cathay Pacific Airways	+64-9-379-0833	www.cathaypacific.com
Emirates	+64-9-968-2208	www.emirates.com
Garuda Indonesia	+64-9-366-1855	www.garuda-indonesia.com
Japan Airlines	+64-9-379-3202	www.jal.com
Korean Air	+64-9-914-2000	www.koreanair.com
Lufthansa German Airlines	+64-9-303-1529	www.lufthansagermanairlines.com
Malaysia Airlines	+64-9-379-3743	www.malaysiaairlines.com
Qantas Airways	+64-9-357-8700	www.qantas.com.au
Singapore Airlines	+64-9-379-3209	www.singaporeair.com
Thai Airways	+64-9-377-3886	www.thaiairways.com
United Airlines	+64-9-379-3800	www.unitedairlines.com

Auckland International Airport is located ½ hour drive from Auckland city. It has daily services by all major international airlines to/from Australia and most Asian and European cities. For any group or individual transport requirements from Auckland Airport to your Hotel please contact Greg Paul Coaches at gp.coaches@clear.net.nz

21.6 Copy Service

For colour photocopying service, contact:

Warehouse Stationery, 2nd Floor, Downtown Shopping Centre
Cnr Custom & Albert Streets, Auckland City.
Telephone: +64-9-358-4454
Hours of Operation: 8am to 6pm Monday – Friday
9am to 6pm Saturday - Sunday

21.7 Mobile Phone (Rental, Service & Bylaws)

You may use your own mobile phone in New Zealand by prior arrangement with your system provider or hire a phone in New Zealand through Vodafone Rental. The Mobile Phone Booking Form is available from the rally office info@rallynz.org.nz



As from 1 November 2009, it is illegal for drivers to talk, send or read text messages on handheld mobile phones, or other portable electronic devices whose functions include being a telephone, while driving a vehicle.

Drivers using a handheld mobile are liable for an \$80 fine from the Police and 20 demerit points.

You can use a hands-free device or two way radio and there is an exemption for 111 calls made in emergency situations.

Mobile phones which are not hands free may be used by a driver when the vehicle has stopped - but not when it is stopped in traffic or at traffic lights.

21.8 Security Companies

Rally New Zealand will arrange security as required onsite for the Queens Wharf, Service Park. Please contact the Rally Office to make arrangements.

21.9 Taxis

For taxi or shuttle services contact:

- Auckland Taxi Co-Op Ph:+64-9-300 3000
- Alert Taxi Ph:+64-9-309 2000
- Super Shuttle Freephone: 0800-727 747

21.10 Drivers' Licence Requirements

Overseas drivers with a non-English licence must carry an accurate English translation or an International Driving Permit (IDP) while driving.

21.11 Maps

Visitors to New Zealand belonging to a motoring club affiliated to the AIT, The World Organisation of Motoring and touring clubs, receive free reciprocal membership benefits at the AA. Services offered include the supply of detailed maps, accommodation guides and touring information. Enquiries should be directed to:

- AA Automobile Association - 99 Albert Street, Auckland City Ph: +64-9-302-1825
OR
- Auckland Map Centre - 209 Queen Street, Auckland City Ph: +64-9-309-7725
OR
- Specialty Maps - 46 Albert Street, Auckland City Ph: +64-9-307-2217

21.12 Rally Car & Reconnaissance Car Lease

Rally Drive NZ has a range of lease cars available. Group N Mitsubishi Lancer Evolutions 8 & 9 in both Left and Right Hand Drive available, all with full support packages available including team management, service vehicles, servicing, parts, and logistics. Maramarua Forest testing facilities are also available.

For further information contact: Dale Perry, Rally Drive NZ Limited

Phone: +64-7-847-8777

Facsimile: +64-7-846-6682

Email: motorworld@clear.net.nz

Website: <http://www.rallydrivenz.co.nz>

Prestige Motorsports can offer competitors 2 RHD Group N Mitsubishi Evo 8 Rally Cars, Recce cars, Event Management and Servicing. Over 25 years experience. We can arrange packages to suit individual requirements. Please contact Peter Van Breugel to discuss.

Phone: +64-9-277-9700

Contact: Peter Van Breugel on +64-21-947-556

Email: peter@prestigeautomotive.co.nz

Website: www.prestigeautomotive.co.nz

Address: Great South Road, Manukau City, Auckland



Kayne Barrie Motorsport Ltd has a new Ford Fiesta ST150 Sporting Trophy car available for lease. This is a right-hand drive car, has never been rallied, and is Group N3 compliant. Please call or email Kayne to discuss.

Phone: +64-27-497-5330 or +64-9-441-9449

Email: kaynekbm@hotmail.com

Neil Allport Motorsport can provide event management and servicing. Rally cars for lease include Left and Right Hand Drive Mitsubishi Evolution cars.

New Zealand distributor for leading motorsport products.

Phone: +64-9-579-0113

Email: namsport@xtra.co.nz

Website: www.namsport.co.nz

Ralliart New Zealand can provide event management and servicing. Rally cars for lease include Left and Right Hand Drive Mitsubishi Evolution cars.

Phone: Ralliart New Zealand +64-9-525-3087

Contact: Bill Morton +64-21-967-231

Email: admin@ralliartnz.co.nz

Address: 34 Olive Road, Penrose, Auckland

21.13 Travelling from Auckland to Whangarei (Reconnaissance & Day 1)

Travelling from Auckland to Whangarei (north of Orewa) the main highway is the Northern Gateway Toll Road (there is an alternative free route - see below)

LOCATION

The Northern Gateway Toll Road extends north from the roundabout at the current end of the motorway to connect with the existing State Highway 1 route just south of Puhoi.



TOLL TARIFF

You are charged a toll each time you use the Northern Gateway Toll Road. The toll depends on the type of vehicle and is GST inclusive. The toll for using the Northern Gateway Toll Road is:

Car	\$2.00
Light Commercial vehicle	\$2.00
Heavy Vehicle	\$4.00
Car and trailer	\$2.00

There is no additional charge for towing a caravan or trailer. The toll is based on the type of vehicle that is towing the caravan/trailer.

HOW TO PAY A TOLL

Pay as you go

Pay in advance or within three days of using the road via the website (www.tollroad.govt.nz) or freephone 0800-40-20-20 (from a NZ phone only) or +64-6-953-6200 (from international phones) between 8am – 6pm daily.

Self service kiosks (NOT RECOMMENDED)

To pay by EFTPOS, credit card or cash you will need to use one of the self service kiosks located before the toll road. The manual toll payment points are at the following locations:

- For northbound traffic the self service kiosk is located inside the BP Connect at Dairy Flat
- For southbound traffic the self service kiosk is located just off State Highway 1, approximately 1 km before the Waiwera exit



To use one of the self service kiosks you need to know your vehicle registration number, remember to note this down before leaving your vehicle to pay.

THE FREE ROUTE

Motorists are able to choose whether to pay and use the toll road or take the free route along the Hibiscus Coast Highway (SH17) or State Highway 16. For more information, please visit www.tollroad.govt.nz

21.14 Car Dealers

Audi	Giltrap Prestige	100 Great North Road, Grey Lynn	+64-9-360 3200
Citroen	Andrew Simms European	500 Broadway, Newmarket, Auckland	+64-9-523 1939
Fiat	Andrew Simms European	500 Broadway, Newmarket, Auckland	+64-9-523 1939
Ford	John Andrew Ford	Cnr Newton & Grt North Rds, Grey Lynn, Akld	+64-9-376 9829
Holden	Davie Motors Holden	58 Cavendish Drive, Manukau	+64-9-261 2000
Honda	Honda Cars Auckland	455 Broadway, Newmarket, Auckland	+64-9-524 5099
Hyundai	Winger Hyundai	279 Great South Road, Greenlane, Auckland	+64-9-580 8800
Mazda	John Andrew Mazda	Cnr Newton & Grt North Rds, Grey Lynn, Akld	+64-9-376 9829
Mitsubishi	Andrew Simms Mitsubishi	500 Broadway, Newmarket, Auckland	+64-9-523 1939
Nissan	Schofield & Co	48-58 Great South Rd, Newmarket, Auckland	+64-9-520 6369
Peugeot	Continental Cars	227 Great South Rd, Greenlane, Auckland	+64-9-526 6958
Skoda	Giltrap Skoda	77 Great South Rd, Newmarket, Auckland	+64-9-522 9922
Subaru	Winger Subaru	444 Great South Road, Greenlane, Auckland	+64-9-522 2001
Suzuki	Suzuki of Greenlane	460 Great South Rd, Newmarket, Auckland	+64-9-523 4983
Toyota	Giltrap City Toyota	101 Great North Rd, Auckland City	+64-9-378 9919
Volkswagen	European Motors	1 Nixon Street, Grey Lynn, Auckland	+64-9-360 9869

21.15 Supermarket

For all of your grocery and food supplies there are two Supermarkets in close proximity to Rally HQ:

- | | |
|---|---|
| ▪ Victoria Park New World
2 College Hill, Freemans Bay, Auckland City
Phone: +64-9-307 8400
Hours: 7 days per week 7am to 12 midnight. | ▪ Countdown Quay Street
40 Quay Park, Quay Street, Auckland City
Phone: +64-9-275 2567
Hours: 7 days per week Open 24 hours. |
|---|---|

21.16 Personal Accident Insurance

All New Zealand residents and overseas visitors to New Zealand are covered by 24hour no-fault personal injury caused by an accident, where that accident is deemed to be an accident as defined in the "Injury Prevention, Rehabilitation and Compensation Act 2001".

Overseas visitors are recommended to have personal travel and medical insurance.

Third Party Property Insurance or Comprehensive Vehicle Insurance is the responsibility of the entrant/competitor.

The service vehicles, management vehicles and reconnaissance vehicles, including those bearing special plates issued by the organisers may never be considered as official participants in the rally. They are therefore not covered by the insurance policy of the rally and will remain the sole responsibility of their owner.

Competitors and crew members are covered for public liability under a master policy held by MotorSport New Zealand for an amount of up to **NZ\$10 million** for the entire event. Full details may be obtained upon request to the organisers.

In the event of an accident the competitor or his/her representative must notify the Clerk of the Course in writing within 4 hours. He/She must provide full details including the names and addresses of those involved and any witnesses.



Third party property insurance:

It is recommended that all competitors obtain as minimum third party property insurance on all Rally Cars and Service Vehicles. For further information contact:

- NAC Insurance
PO Box 1840, Whangarei
Phone: 0800-501-508 (within NZ) or +64-9-985-0112 (from outside NZ)
Email: sales@nac.co.nz
Website: www.nac.co.nz

NOTE: You will receive a special rate if you advise the operator that you are competing in Rally New Zealand.

21.17 Visa Requirements

All competitors, service crews and media are required to have a valid passport and a copy of the 'Special Direction' Letter upon arrival to New Zealand. This letter may be required at the New Zealand border.

The 'Special Direction' letter issued by Immigration New Zealand on 28 October 2009 (Appendix 6) exempts competitors, service crews and media from obtaining a work permit during their travel to Rally New Zealand and must be carried at all times while in New Zealand. (This letter can also be downloaded from the competitors section of our website).

United Kingdom and Australia

British citizens and other British passport holders who produce evidence of the right to reside permanently in the UK can visit for up to 6 months without a visa.

Australian citizens and people who hold a current Australian Permanent Residence Visa or a current Australian Resident Return Visa do not need a New Zealand Visa to enter New Zealand.

If you are visiting for 3 months or less and are from a country in the list below, you will NOT need a visa:

Andorra	Argentina	Austria	Bahrain
Belgium	Brazil	Brunei	Bulgaria
Canada	Chile	Cyprus	Czech Republic
Denmark	Estonia*	Finland	France
Germany	Greece*****	Hong Kong**	Hungary
Iceland	Ireland	Israel	Italy
Japan	Korea (South)	Kuwait	Latvia*
Liechtenstein	Lithuania*	Luxembourg	Malaysia
Malta	Mexico	Monaco	Netherlands
Norway	Oman	Poland	Portugal***
Qatar	Romania	San Marino	Saudi Arabia
Singapore	Slovak Republic	Slovenia	South Africa
Spain	Sweden	Switzerland	United Arab Emirates
United States of America****		Uruguay	Vatican City

* Visa waiver does not apply to people travelling on alien's (non-citizen's) passports issued by these countries.

** Residents of Hong Kong travelling on Hong Kong Special Administrative Region or British National (overseas) passports.

*** Portuguese passport holders must also have the right to live permanently in Portugal.

**** Including nationals of the USA.

***** Greek passport holders whose passports were issued on and after 1 January 2006. (Greek passports issued before 1 January 2006 are not acceptable for travel after 1 January 2007.)

If you do not require a visa and are therefore a Visa waiver visitor you must:

- Hold a valid ticket to a country you have the right of entry to, and
- Have sufficient money to support yourself during your stay, and
- Hold a passport valid for 3 months beyond the date you are leaving New Zealand, and
- Only visit New Zealand for the time granted on arrival (if you wish to visit for a longer period you will need to apply for a Visitor's Visa).

For those competitors who require a visa please contact the Rally Office and we will issue you with an invitation to the rally and a copy of the 'Special Direction' letter issued by Immigration New Zealand, which will assist with your application for a visa. Please apply for this no later than 6 weeks before your travel date.

For further information visit www.immigration.govt.nz/migrant/stream/visit/visitors/process/checklist.htm

21.18 Hire Equipment

Hirequip is the Official Supplier to Rally New Zealand.

To access preferential rates on all hire equipment please contact the rally office who will arrange supply with Hirequip.

21.19 Leisure & Recreation Options

Auckland's waterside location has fostered the locals' love affair with the sea, earning this place the nickname "City of Sails".

Auckland sprawls over a narrow isthmus between the sparkling waters of the Waitemata and Manukau Harbours. A cloak of rainforest covers the surrounding hills, dozens of dormant volcanic cones dot the landscape and enchanting holiday islands are scattered throughout the vast Hauraki Gulf.

Auckland's heart beats to a Polynesian rhythm, its people a melting pot of European, South Pacific and Asian cultures and a strong indigenous Maori heritage. This diversity brings with it an abundance of unique dining and shopping experiences.

Check out the website www.aucklandnz.com.

21.20 Attractions & Activities in Auckland

There is a huge range of attractions and activities available in Auckland: adventure, culture, relaxation and fantastic natural scenery. Below are a few regional highlights, but to find out more check out www.aucklandnz.com.



Auckland Museum

Overlooking the Waitemata Harbour and occupying one of New Zealand's finest heritage buildings, the Auckland Museum houses a collection of intriguing artefacts showcasing New Zealand history and culture.

Ph. +64-9-306-7067 www.aucklandmuseum.com



Auckland Art Gallery Toi o Tamaki

View one of New Zealand's most significant collections of historic and contemporary New Zealand art.

Ph. +64-9-307-7700 www.aucklandartgallery.govt.nz



Auckland Zoo

For a great day out for all ages, head along to the Zoo where you can see animals split into areas such as the African Pridelands, the Primate Trail, the Kiwi & Tuatara House and the Rainforest.

Ph. +64-9-360-3805 www.aucklandzoo.co.nz



Kelly Tarlton's Antarctic Encounter & Underwater World

Swim with sharks or stingrays, see penguins playing in real ice and snow, and discover fascinating sealife.

Ph: +64-9-528-0603 www.kellytarltons.co.nz



Cornwall Park

A large landscaped park developed for the recreation and enjoyment of the public, centred on a volcanic cone, One Tree Hill.

Ph: +64-9-630-8485 www.cornwallpark.co.nz



Glass Bottom Boat at Goat Island Marine Reserve

Renowned for its amazing marine life, Goat Island is New Zealand's first marine reserve and a great way to spend a day. Check out the schools of fish from the comfort of the Glass Bottom Boat.

Ph: +64-9-422-6334 www.glassbottomboat.co.nz



Museum of Transport & Technology – MOTAT

New Zealand's largest transport and technology museum with exciting exhibitions and interactive 'hands on' areas.

Ph: +64-9-815-5800 www.motat.org.nz



North Head

Take a step back in time by exploring the tunnels of North Head and discovering its military history. There also stunning views of the Hauraki Gulf and back to the city centre on offer. You can reach North Head by walking along King Edward Parade on the waterfront from Devonport.



Voyager National Maritime Museum

Experience New Zealand's maritime story, celebrate the achievements of early and modern day mariners and even take a harbour cruise on a traditional sailing scow.

Ph: +64-9-373-0800 www.maritimemuseum.co.nz



Rangitoto Island

Auckland's iconic island is home to the world's largest Pohutukawa forest, lava flows and bush walks. The island emerged from the sea 600 years ago in a series of volcanic eruptions.



Sky Tower

For the most amazing view in Auckland, visit the southern hemisphere's tallest building. There are three observation levels offering unrivalled views across the city.

Ph: +64-9-363-6000 www.skytower.co.nz

SkyWalk

If you want SkyWalk with



and SkyJump

a bit more adventure while at the Sky Tower, you can walk around the outside with 192 metres above the ground, and then take the quick route down by bungy jumping off SkyJump.

www.skywalk.co.nz www.skyjump.co.nz



Snowplanet

The only indoor snow resort in the southern hemisphere, open year round only 20 minutes north of Auckland.

Ph: +64-9-427-0044 www.snowplanet.co.nz



Tiritiri Matangi Island

Spend a day visiting the island – one of the most successful conservation projects in the world. The island is a sanctuary for many rare native bird species.



Waiheke Island

Only a scenic 35 minute ferry ride from downtown Auckland, Waiheke is a picturesque blend of farmland, forests, beaches, vineyards and olive groves.

www.waihekenz.com



Waiwera Infinity Thermal Spa Resort

Natural hot pools, wellness spa, massage, therapies, accommodation, holiday park and family fun.

Ph: +64-9-427-8800 www.waiwera.co.nz



West Coast Beaches

With its pristine native bush, coastal rainforest and rugged black sand beaches, Auckland's west coast is a natural playground for visitors to explore. A highly recommended few include Karekare, Piha, Te Henga – Bethells, and Whatipu.



XFLIGHT

Operating high speed scenic and aerobatic flights around the greater Auckland region.

wayne@xflight.co.nz www.xflight.co.nz



Auckland's Whale and Dolphin Safari

Discover the thrill of watching dolphins and whales in Auckland's Hauraki Gulf.

Ph: +64-9-359-5987 www.explorenz.co.nz



Sail NZ

Offering the unique opportunity to experience sailing an America's Cup yacht on the Hauraki Gulf, and you can even match race against another yacht.

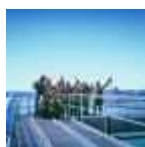
Ph: +64-9-359-5987 www.explorenz.co.nz



Auckland Bridge Bungy

Home to the world's first harbour bridge bungy jump, launch yourself off the suspended 'Bungy pod' underneath Auckland's Harbour Bridge.

Ph: +64-9-361-2000 www.bungy.co.nz



Auckland Bridge Climb

Go under, around, up and over Auckland's historic Harbour Bridge and experience Auckland from a new perspective.

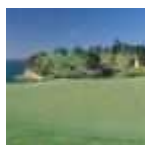
Ph: +64-9-361-2000 www.aucklandbridgeclimb.co.nz



Formula E

Drive new generation, state of the art Italian-designed indoor race karts with zero emissions and low noise. The best karting in Auckland.

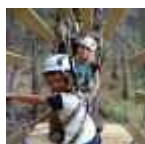
Ph: +64-9-257-4001 www.formulae.co.nz



Gulf Harbour Country Club

Offering spectacular views on a world-class course, home of the 2005 US Open Champion Michael Campbell.

Ph: +64-9-424-0971 www.gulpharbourcountryclub.co.nz



Tree Adventures

Climb the trees and traverse some of the eight trails which span over three hectares of the Woodhill Forest. Trails have been designed to suit all levels of abilities.

www.treeadventures.co.nz

Regional Adrenalin:

- 4WD quad biking through Woodhill Forest
- Canyoning
- Surfing at Piha
- Skydiving
- Mountain biking through a forest

www.aucklandnz.com

21.21 Restaurants

Auckland offers a wide range of eateries that specialise in locally grown produce, seafood from the abundant harbours and award-winning wines to match. Treat yourself to a fancy dinner in one of the many restaurants, or if you're looking for a quick bite to eat, check out a local Asian food hall, crammed with cheap tasty eats.

Below we have included just a few options to tempt your tastebuds. To find out more check out www.aucklandnz.com

In the city:



Dine by Peter Gordon

A chic elegant and award-winning restaurant, with a fantastic menu designed by New Zealand born international celebrity chef, Peter Gordon.

Address: Level 3, SKYCITY Grand Hotel, 90 Federal Street, Auckland City

Phone: 09-363-7030 **Website:** www.skycityauckland.co.nz/restaurants/dine.html



Euro

Offering the perfect setting for a dining experience to remember.

Address: Shed 22, Princes Wharf, Auckland City

Phone: 09-309-9866 **Website:** www.eurobar.co.nz



Soul Bar & Bistro

Open air style dining in the heart of the Viaduct overlooking the sparkling water.

Address: Viaduct Harbour, Auckland City

Phone: 09-356-7249 **Website:** www.soulsearch.co.nz



The Observatory

For a dining experience like no other, enjoy a sumptuous brasserie-style buffet from the top of the Sky Tower.

Address: Sky Tower, Cnr Federal & Victoria Streets, Auckland City

Phone: 09-363-6000 **Website:** www.skycityauckland.co.nz



White

An elegant contemporary restaurant with superb views over the Auckland harbour.

Address: Hilton Hotel, Princes Wharf, 147 Quay Street, Auckland City

Phone: 09-978-2000 **Website:** www.hilton.co.nz



Wildfire

A truly authentic Churrascaria, Brazilian BBQ at its best.

Address: Princes Wharf, Quay Street, Auckland City

Phone: 09-353-7595 **Website:** www.wildfirerestaurant.co.nz



Kermadec

Specialising in premium fresh seafood in a uniquely New Zealand dining experience.

Address: Viaduct Harbour, Auckland City

Phone: 09-304-0454 **Website:** www.kermadec.co.nz

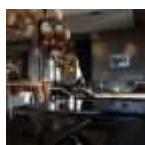


Kitchen

Contemporary New Zealand cuisine, nestled in the heart of Hotel DeBrett.

Address: Hotel DeBrett, 3b O'Connell Street, Auckland City

Phone: 09-969-1545 **Website:** www.hoteldebrett.com/kitchen/

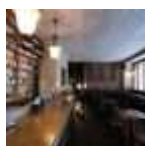


Northern Steamship Co. Brewbar

Macs brewbar located in a historic building on Auckland's waterfront.

Address: 122 Quay Street, Britomart, Auckland City

Phone: 09-374-3952 **Website:** www.northernsteamship.co.nz



Agents & Merchants and Racket

Discover two distinct bars located in Roukai Lane in the Britomart quarter.

Address: Roukai Lane, off Customs St East, Britomart, Auckland City

Phone: 09-309-5854 **Website:** www.britomart.org

In the suburbs:

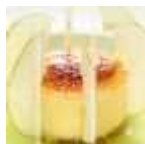


Meredith's

Modern New Zealand cuisine from Michael Meredith, and the Metro Restaurant of the Year 2009.

Address: 365 Dominion Road, Mt Eden

Phone: 09-623-3140



The French Café

Offering contemporary European cuisine in a sophisticated and intimate environment.

Address: 210B Symonds Street, Newton

Phone: 09-377-1911 **Website:** www.thefrenchcafe.co.nz

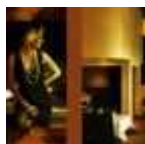


Gina's Pizza & Pasta Bar

Great Italian food, wonderful service and a hearty ambience for which it is famous for.

Address: 209 Symonds Street, Newton

Phone: 09-302-2061 **Website:** www.ginas.co.nz



Non Solo Pizza

Enjoy a mix of traditional and contemporary Italian food in a beautiful courtyard.

Address: 259 Parnell Road, Parnell

Phone: 09-379-5358 **Website:** www.nonsolopizza.co.nz

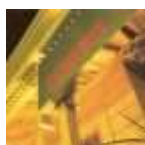


Cibo

Nestled away in an old chocolate factory is one of Auckland's best kept secrets.

Address: 91 St Georges Bay Road, Parnell

Phone: 09-303-9660 **Website:** www.cibo.co.nz



Rocco

Relax in an intimate atmosphere and enjoy a Spanish influenced menu.

Address: 23 Ponsonby Road, Ponsonby

Phone: 09-360-6262 **Website:** www.rocco.co.nz

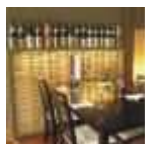


Clooney

Embracing the European tradition of constantly changing menus, making use of produce that is in season.

Address: 33 Sale Street, Freemans Bay

Phone: 09-358-1702 **Website:** www.clooney.co.nz

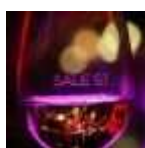


Soto Japanese Garden Restaurant

New style Japanese cuisine from executive chef Makoto Tokuyama who trained at Ubon by Nobu in London.

Address: 13 St Marys Bay Road, Freemans Bay

Phone: 09-360-0021 **Website:** <http://soto.co.nz/>



Sale St

A mega-venue that features a micro-brewery, open kitchen, coffee roaster as well as live music.

Address: 7 Sale Street, Freemans Bay

Phone: 09-307-8148 **Website:** www.sale-st.co.nz

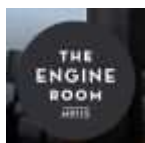


Jervois Steak House

Chef Simon Gault offers up a classic steakhouse experience with no less than nine choices of steak.

Address: 70 Jervois Road, Herne Bay

Phone: 09-376-2049 **Website:** www.jervoissteakhouse.co.nz



The Engine Room

A small award-winning bistro situated in a former post office, circa 1930 in Northcote Point.

Address: 115 Queen Street, Northcote Point

Phone: 09-480-9502 **Website:** www.engineerom.net.nz



Cable Bay

Waiheke Island's finest restaurant nestled in the Cable Bay Vineyard.

Address: 12 Nick Johnstone Drive, Oneroa, Waiheke Island

Phone: 09-372-5889 **Website:** www.cablebayvineyards.co.nz

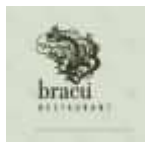


Soljans Estate Winery

Situated at the gateway to Kumeu Wine Country, sample award-winning wines and exceptional cuisine.

Address: 366 State Highway 16, Kumeu

Phone: 09-412-5858 **Website:** www.soljans.co.nz



Bracu

Sitting atop the Simunovich Olive Estate, Bracu offers an extraordinary dining experience.

Address: 49 Main Road, Bombay

Phone: 09-236-1030 **Website:** www.simuolive.co.nz/section.php?sec=13